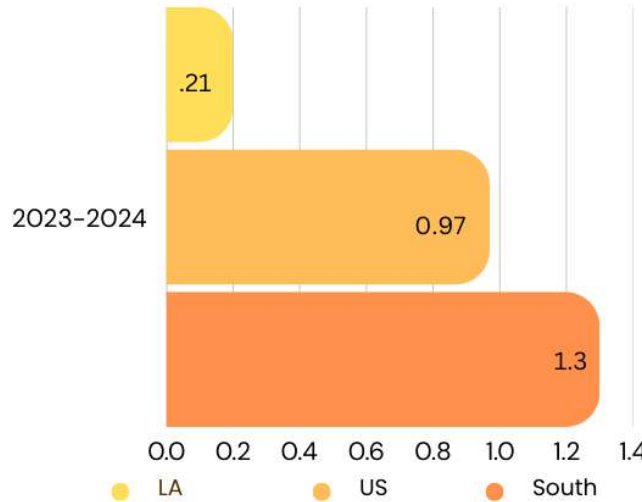




# Population Growth

Percentage growth in state population as compared to that of the nation and the south



## Year-Over-Year

2023 population: 4,588,071  
2024 population: 4,597,740



## Importance

Population growth is a good barometer of the vibrancy of a state's economy.

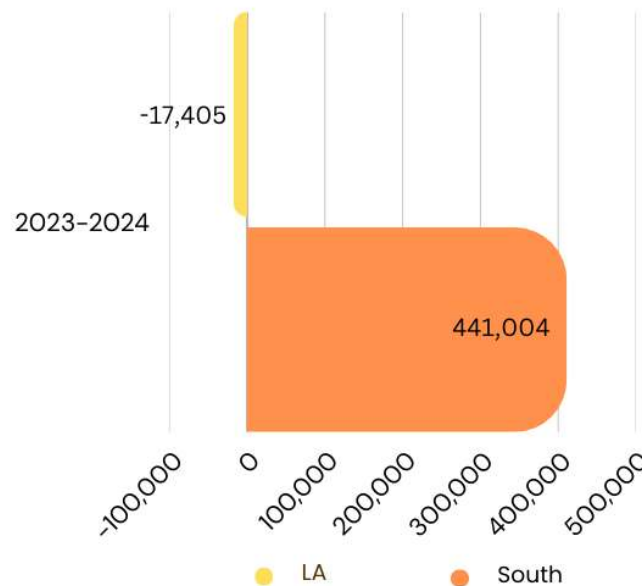
## Source

Annual Population Estimates, U.S. Census Bureau

Louisiana had a population increase of **9,669** from 2023-2024

# Net Domestic Migration

The number of people who moved to Louisiana from another state minus the number of people who moved to another state from Louisiana



## Year-Over-Year

2023 migration: -29,692  
2024 migration: -17,405



## Importance

Net domestic migration is a good indicator of the health of a state's economy and the availability of jobs.

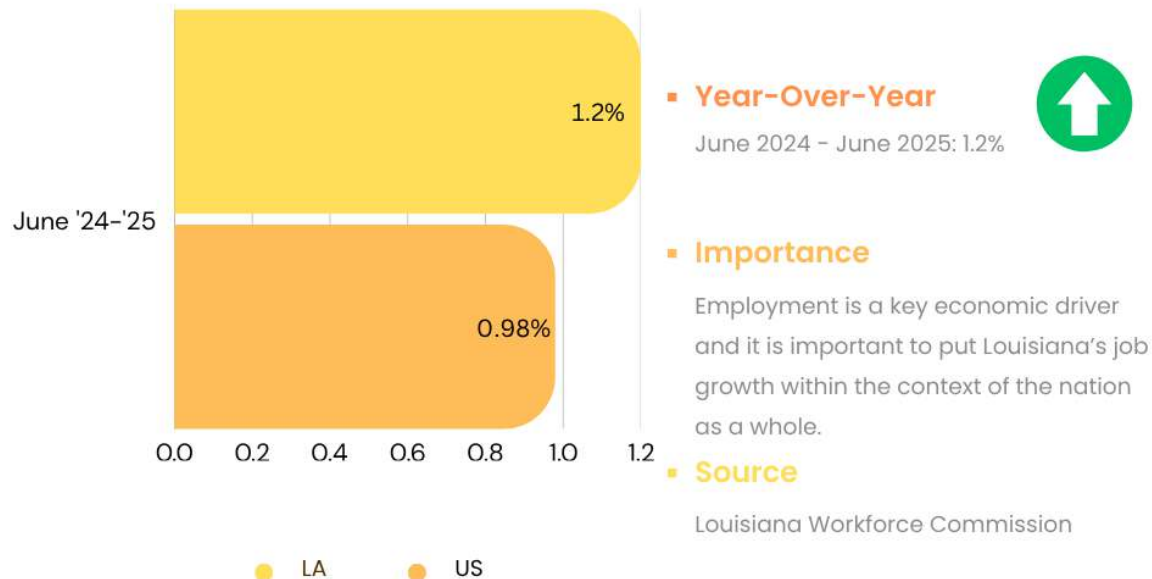
## Source

Annual Population Estimates, U.S. Census Bureau

Louisiana had a net domestic migration of **-17,405** from 2023-2024

# Employment

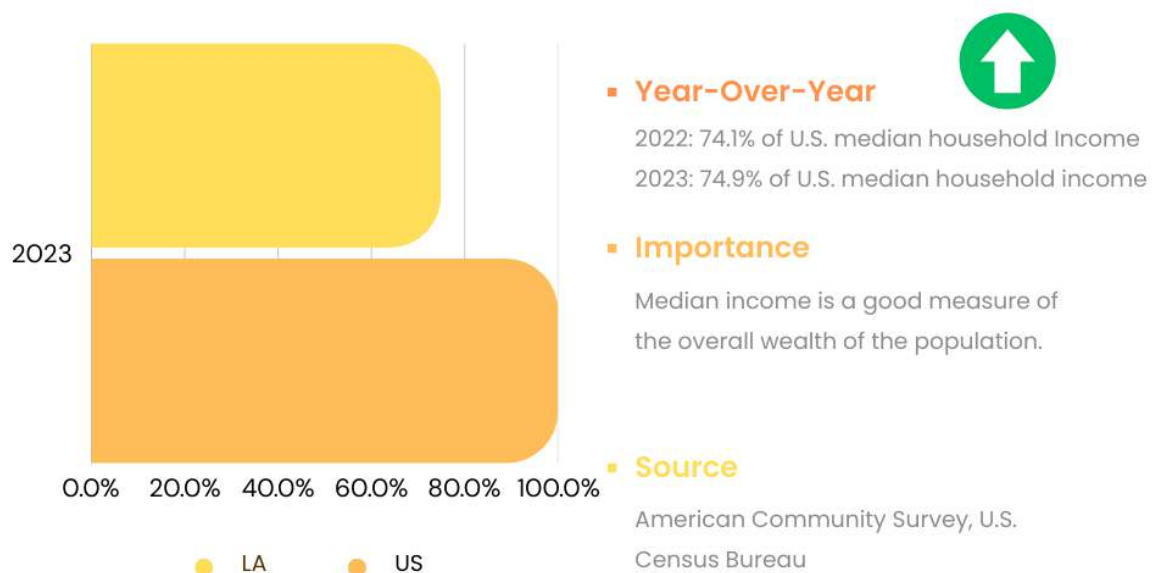
The annual rate of job growth in Louisiana compared to the nation



Louisiana gained **22,900** jobs year over year, June 2024-June 2025

# Median Household Income

Median household income in Louisiana as a percentage of the national median income



Louisiana median household income in 2023 is **\$58,229**.

# Business Tax Climate

Louisiana's ranking in the Tax Foundation's "State Business Tax Climate Index"

# 40

## Year-Over-Year

2023: 39

2024: 40



## Importance

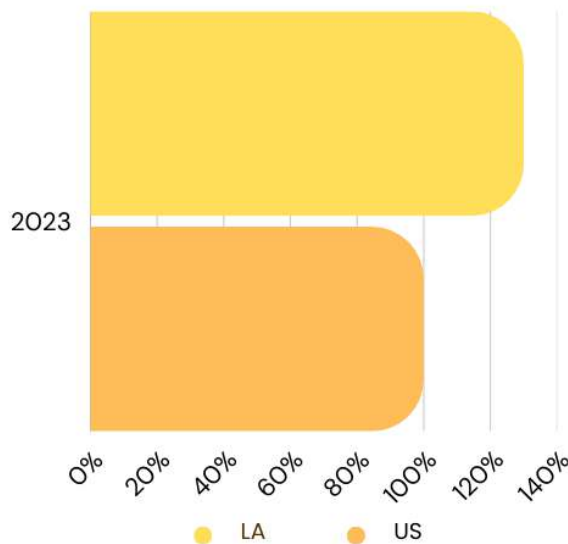
A state's tax climate shows how competitive it is with other states. The Tax Foundation's index is a widely-followed measure of how well state tax systems are structured.

## Source

"2024 State Business Tax Climate Index",  
Tax Foundation

# Poverty Rate

Louisiana's poverty rate as a percentage of the national poverty rate



Louisiana's poverty rate in 2023 is **14.3%**.

## Year-Over-Year

2022: 111% of U.S. poverty rate

2023: 130% of U.S. poverty rate



## Importance

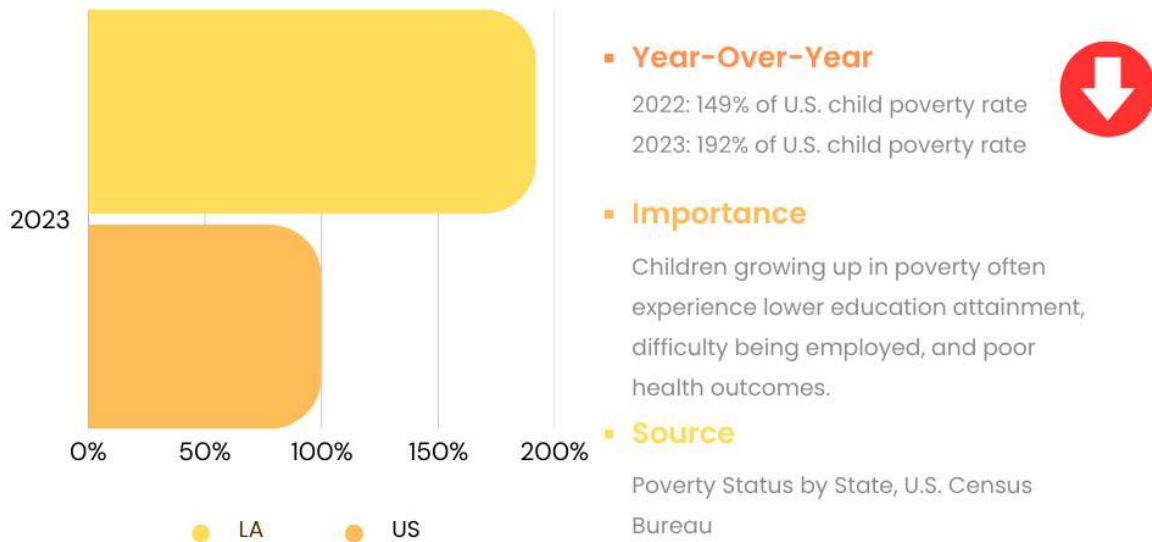
The poverty rate is an indication of a state's overall prosperity and the economic disparities within it.

## Source

Supplemental Poverty Status by State,  
U.S. Census Bureau (3-year average)

# Child Poverty Rate

Louisiana's child poverty rate as a percentage of the national child poverty rate



Louisiana's child poverty rate in 2023 is **29.4%**.

# Supplemental Nutrition Assistance Program (SNAP) Recipients

Numer of people in Louisiana receiving SNAP benefits

